



**Earmould Catalogue**

**Normanby Laboratory Services Limited**

# &#11-1-1

Earmould Style's .....	3
Code Chart.....	3
Code Chart Continued .....	4
Biopore Colours Available.....	5
Standard Colours' .....	5
Marble Effects' .....	5
Fluorescents' .....	6
Biopore with Glitter.....	6
Picture Inserts Available .....	7
Group One – Characters.....	7
Group Two - Characters .....	8
Group Three – Sports Club Badges .....	9
Group Four – Countries.....	9
Acrylic Colours Available.....	10
Hard Acrylic .....	10
Hard Acrylic with Glitter .....	10
Different Coloured Glitters' .....	11
Supply Codes.....	12
Part one .....	12
Part Two .....	13
Agreed Sports Clubs.....	14

# Earmould Style's

## Code Chart

### Standard Solid



- 2101-Hard acrylic
- 2104-Acrylic soft tip
- 2113-Acrylic all soft
- 2102AC-Non-allergic Acrylon
- 2102B- Biopore

### Skeleton



- 2107-Hard acrylic
- 2121-Acrylic all soft
- 2111-Acrylic soft tip
- 2109B-Biopore
- 2109S-Silicone
- 2109C-Biopore colour
- 2109AC-Non-allergic Acrylon

### Shell Mould



- 2106-Hard acrylic
- 2112-Soft Acrylic
- 2108B-Biopore
- 2108S-Silicone
- 2108M-Molloplast
- 2108C-Biopore colour
- 2108AC-Non allergic Acrylon
- 2108C-Biopore colour
- 2110-Acrylic soft tip

### Shell Canal (Meatal Tip)



- 2114-Hard acrylic
- 2116-Soft acrylic
- 2108MT-Biopore

### Half Phantom



- 2117-Hard acrylic
- 2118-acrylic soft tip

## Code Chart Continued

### Open Mould Gap



**2122A2**-Open gap  
**2122B2**-Open gap  
**2122C2**-Open gap  
**2122D2**-Open gap

### Open Mould Claw



**2122A3**-Open claw  
**2122B3**-Open claw  
**2122C3**-Open claw  
**2122D3**-Open claw

### Open Mould Ring



**2122A1**-Open ring  
**2122B1**-Open ring  
**2122C1**-Open ring  
**2122D1**-Open ring

### Carved Mould



**2108CA**-Biopore carved  
**2108UCA**-Ultra carved

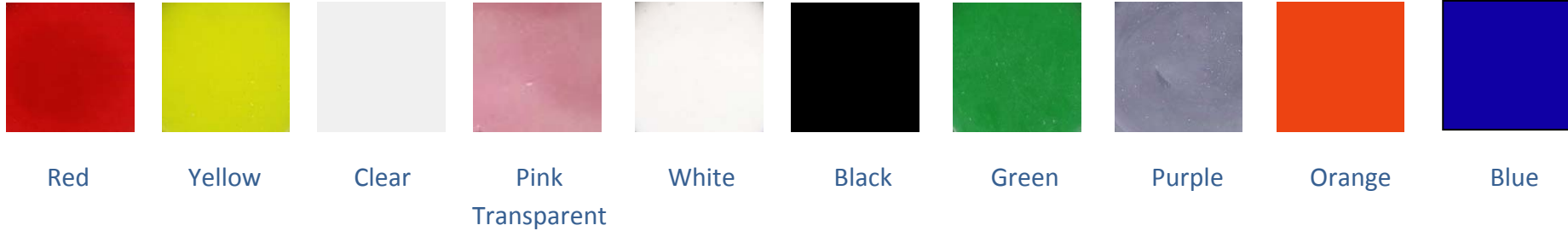
### Phantom



**2114P**-Hard acrylic  
**2116P**-soft acrylic

# Biopore Colours Available

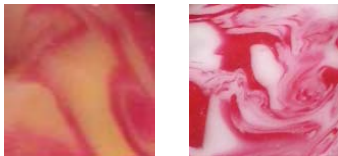
## Standard Colours'



## Marble Effects'

Any 2, of the above colour

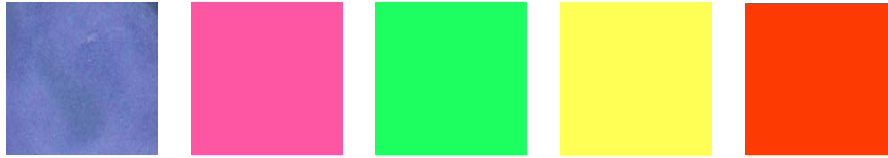
Example;



Red/yellow Red/white

\*The colours shown are only for guidance, the shade of the finished earmould may vary slightly from the above.

## Fluorescents'



Blue

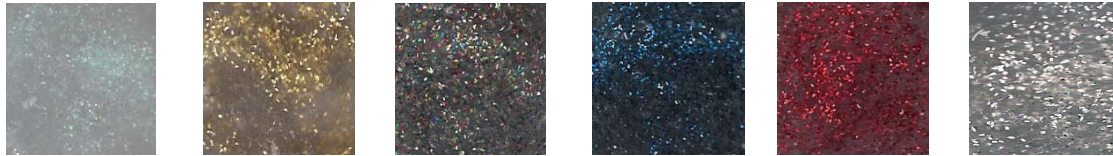
Pink

Green

Yellow

Red

## Biopore with Glitter



Pearlescent

Gold

Multicolour

Blue

Red

Silver

\*The colours shown are only for guidance, the shade of the finished earmould may vary slightly from the above.

# Picture Inserts Available

## Group One – Characters



Teufel  
Devil  
Diablo  
Diablo  
Diavolo  
407-0523



Fledermaus  
Bat  
Chauve  
Murciélago  
Pipistrello  
407-0524



Pinguin  
Penguin  
Pingouin  
Pinguino  
Pinguino  
407-0521



Wespe  
Wasp  
Guêpe  
Avispa  
Vespa  
407-0522



Smiling  
407-0527



Totenkopf  
Skull  
Crâne  
Calavera  
Teschio  
407-0528



Fussballer rot  
Footballplayer red  
Joueur de football rouge  
Futbolista rojo  
Calciatore rosse  
407-0525



Clown  
407-0526



Fussballer blau  
Footballplayer blue  
Joueur de football bleu  
Futbolista azul  
Calciatore blu  
407-0531



Surfer  
407-0533



Zauberer  
Wizard  
Magicien  
Hechicero  
Mago  
407-0529



Skater 2  
407-0530



Schmetterling  
Butterfly  
Papillon  
Mariposa  
Fourfala  
407-0536



Katze  
Cat  
Chat  
Gato  
Gatto  
407-0537



Doppeldecker  
Biplane  
Biplan  
Biplan  
Biplano  
407-0534



Flugzeug  
Plane  
Avion  
Avión  
Aereo  
407-0535



Hund schwarz  
Black dog  
Chien noir  
Perro negro  
Cane nero  
407-0540



Deutschland  
Germany  
Allemagne  
Alemania  
Germania  
407-0541



Hase  
Rabbit  
Lapin  
Conejo  
Coniglio  
407-0538



Tiger  
Tiger  
Tigre  
407-0539

## Group Two - Characters



Krokodil  
crocodile  
crocodile  
cocodrilo  
**407-0101**



Frosch  
frog  
grenouille  
rana  
**407-0102**



Tennis  
tennis  
tennis  
tenis  
**407-0103**



Papagei  
parrot  
perroquet  
papagayo  
**407-0104**



Marienkäfer  
ladybird  
coccinelle  
mariquita  
**407-0105**



Drache  
dragon  
dragon  
dragón  
**407-0106**



Fisch  
fish  
poisson  
pez  
**407-0107**



Eule  
owl  
hibou  
lechuza  
**407-0108**



Formel 1  
formula 1  
formule 1  
formula 1  
**407-0109**



Elefant  
elephant  
éléphant  
elefante  
**407-0110**



Herz  
heart  
coeur  
corazón  
**407-0111**



Ente  
duck  
canard  
pato  
**407-0112**



Dinosaurier  
dinosaur  
dinosaurs  
dinosaurio  
**407-0113**



Motorrad  
motorbike  
motocyclette  
motocicleta  
**407-0114**



Schnecke  
snail  
escargot  
caracol  
**407-0115**



Bär  
bear  
ours  
oso  
**407-0116**



Racing  
racing  
racing  
racing  
**407-0117**



Pilze  
mushroom  
champignon  
seta  
**407-0118**



Ferrari  
Ferrari  
Ferrari  
Ferrari  
**407-0119**



## Group Three – Sports Club Badges



Sunderland  
A.F.C



Middlesbrough  
F.C.



Newcastle  
United F.C.



Liverpool  
F.C.



Arsenal  
F.C.



Leeds  
Rhinos

\*Please see page 14 for the full list of sports clubs available.

## Group Four – Countries



England



Scotland



Ireland



Wales



Union Jack

\*All Countries are available on request.

# Acrylic Colours Available

## Hard Acrylic



Purple

(C1)



Lunar Yellow

(C2)



Red

(C3)



Magenta

(C4)



Blue

(C5)



Black

(C6)



Green

(C7)



Turquoise

(C8)



Orange

(C9)

## Hard Acrylic with Glitter



Purple

(CG1)



Lunar Yellow

(CG2)



Red

(CG3)



Magenta

(CG4)



Blue

(CG5)



Green

(CG7)



Turquoise

(CG8)



Orange

(CG9)

## Different Coloured Glitters'

For hard and soft acrylic



Blue



Silver



Gold



Pearlescent



Multicoloured



Red

# Supply Codes

## Part one

Description of goods	Product code
Hard acrylic solid	2101
Hard acrylic skeleton	2107
Hard acrylic shell	2106
10M/11M Tip	2214
10M/11M Claw retention	2223
10M/11M Full shell	2206
Canal tip Hard acrylic	2114
Canal tip Soft acrylic	2116
Hard acrylic, soft meatal tip	2115
Half phantom, hard acrylic	2117
Half phantom, soft meatal tip	2118
Phantom, hard acrylic	2114P
Phantom, soft acrylic	2116P
Open mould	2122A1

Description of goods	Product code
Open mould	2122A2
Open mould	2122A3
Open mould	2122B1
Open mould	2122B2
Open mould	2122B3
Open mould	2122C1
Open mould	2122C2
Open mould	2122C3
Open mould	2122D1
Open mould	2122D2
Open mould	2122D3
Hard acrylic solid, soft meatal tip	2104
Hard acrylic skeleton, soft meatal tip	2111
Hard acrylic shell, soft meatal tip	2110

## Part Two

Description of goods	Product code
Soft acrylic solid, hard acrylic back	2113
All soft acrylic shell	2112
All soft acrylic skeleton	2121
Solid (Cold cure)	2102
Shell (Cold cure)	2108
Skeleton (Cold cure)	2109
Biopore solid	2102B
Biopore shell, non-allergic	2108B
Biopore shell, carved	2108CA
Biopore shell, ultra carved	2108UCA
Biopore Skeleton, (specify colour)	2109C
Biopore Shell Colour (specify colour)	2108C
Biopore, skeleton	2109B
Silicone shell, non-allergic shell	2108S
Silicone , non-allergic skeleton	2109S
Biopore Marble Effect	2108MB

Description of goods	Product code
Swim Mould Biopore Floatable	2119F
Swim Mould Biopore Colour	2119C
Swim Mould Biopore	2119
Non-allergic open, claw,ring or gap	2122AC
Non-allergic skeleton-Acrylon	2109AC
Non-allergic shell-Acrylon	2108AC
Gold Plated	GP
Molloplast B Shell	2108M
Libby Horn Tubing 3/4mm	LH
Thick Wall Tubing	TW
Staye Dry Tubing	Staye dry
Glitter (choice of colours)	Glitter
Picture Insert	Picture
Barbed Elbow	Barbed
Nano coating	NC

# Agreed Sports Clubs

## Premier League Club's

Arsenal FC  
Everton FC  
Liverpool FC  
Manchester City FC  
Newcastle United FC  
Norwich City FC  
Reading FC  
Tottenham Hotspur  
Sunderland AFC  
Swansea City FC  
West Brom FC  
Wigan Athletic

## Championship Clubs

Barnsley FC  
FC Burnley FC  
Crystal Palace FC  
Huddersfield Town FC

Hull FC  
Middlesbrough FC  
Nottingham Forrest FC  
Peterborough United FC  
Watford FC

## Other Football Clubs

Hartlepool United FC  
Yeovil Town FC

## Rugby League

Bradford Bulls  
Castleford Tigers  
Hull KR  
Leeds Rhinos  
St Helens  
Wakefield Wildcats  
Widness Vikings  
Wigan Warriors

## Rugby Union

Sale Sharks

**\*If you have a sports club local to you and do not see their name then please get in touch and we will try and obtain permission to use their club crest/logo.**